

THE 203 PROJECT



A SUSTAINABLE SHOWHOUSE AT
THE DARIEN COMMUNITY ASSOCIATION

PRESENTED BY

CTC&G
Connecticut Cottages and Gardens



The Darien
Community
Association

Welcome

We are delighted to welcome you to The 203 Project showhouse. You are now a part of the magic.

For several weeks, over one hundred artists, designers, woodworkers, builders, wallpaper hangers, painters, plumbers, electricians, organizers, masons, photographers, upholsterers, and landscapers have been making magic at the DCA. And all along the way, they've been generously – and enthusiastically – supported by hundreds of organizations, businesses, donors and volunteers.

To say that our community has rallied around The 203 Project is the understatement of the century.

Every space in our beautiful, historic home has been given a “glow up.” They have been awakened with color, sparkle, texture and art. They've been designed with repurposed mirrors, reupholstered furniture, and reimagined pieces. In every space, you will find something joyful, something that will surprise and delight.

Thank you for being a part of the magic. Please come back soon!



With “glowing” gratitude,

Erin Noonan
Executive Director, Darien
Community Association

Program Designed by Cait Fields
caitbfields@gmail.com
caitfields.com

Itinerary

Start your tour

Front Door

Designed by: **Nielsen's Florist**

Main Entrance

Designed by: **Prudence Bailey**

McKitterick Room

Designed by: **Last Detail Interior Design: Carey Karlan**

Library

Designed by: **Kelly Interiors**

Terrace

Designed by: **Jessica Matteson**

Dining Room

Designed by: **Sarina Galu Interiors**

East Room & Closet

Designed by: **Fiona Leonard**

Secret Garden

Designed by: **Kelly McGovern**

Continue your tour

Garden Reception

Designed by: **William Lyon Designs**

Garden Ballroom

Designed by: **Krista Fox Interiors**

Kitchen + Hallway

Designed by: **Karen Bow Interiors**

Employee Spaces

Designed by: **Collaborative**

Drawing Room

Designed by: **Joanne O'Neil**

Art Gallery

Curated by: **Mary Manning**

Private Events Office

Designed by: **Alicia Sands Tiberio**

Bridal Suite

Designed by: **Elena Phillips Interiors**

Thank You to Our Sponsors

Exclusive Sponsors



Featured Sponsors



Meredith & Whitney
George

VISUAL COMFORT
& Co.

ARHAUS



COMPASS
The Anika Charron & Julie Bauer Team

COMPASS
Ellen McCue

COMPASS
Andrea Kostanecki

DAVID HARVEY



DARIEN
SPORT SHOP

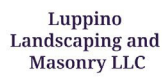
Darien Men's
Association



Dana Grunow Amy Nelson
Sara Parent Lisa Primmer

primmertravelteam@ellittravel.com





Additional Thanks



Ambassadors

AMG Catering & Events | Best in Gourmet | Stacie Allen | Connie Casey | Donna Collins
Darien Chamber of Commerce | Susie Lindenberg | Mary Manning | Dorothy McClure | Mary Morant
Total Printing | Karen Vogel

DCA Board of Directors

Caroline Burke | Patricia Cunningham | Tom Igoe | Sue Kunze | Tracy Marra | Lisa Miller | Arpita Muchhal
Suzanne Mulliken | Jim Phillips | Sarah Ritchey | Flora Smeaton | Liza Smith | Bert von Stuelpnagel
Terrie Van de Graaf

Volunteers:

Susan Hamill | Holly Hurd | Lori Leckliter | Laurie Orem | Deb Suckow | DCA Greenhouse Group
DMA Woodworking Team

C T O G & G

Connecticut Cottages and Gardens

COTTAGESGARDENS.COM | MARCH 2024

20
Years of
Design!



Architecture!

IS PROUD TO PRESENT

THE 203 PROJECT

A SUSTAINABLE SHOWHOUSE AT THE DARIEN COMMUNITY ASSOCIATION

C&G MEDIA GROUP / COTTAGESGARDENS.COM /    COTTAGESGARDENS

The DCA 203 Project | Showhouse 2024 **6.**



ALCHEMY

CUSTOM CELEBRATIONS & CUISINE

Come make magic with us!

CONTACT US TO PLAN YOUR NEXT EVENT

2 Wilton Avenue • Norwalk, CT 06851 • info@alchemycelebrations.com • alchemycelebrations.com

ESTD · A LITTLE · 2012

SOMETHING WHITE

BRIDAL  COUTURE



Get to know us...

Nestled into the heart of downtown Darien, A Little Something White has established itself as one of the nation's premiere bridal and formalwear boutiques. The boutique is designed to feel luxurious yet welcoming, a place where customers know they will find exceptional attire while being showered with kindness and celebration. When you shop at A Little Something White, you are paired with a dedicated stylist who will help you perfect your desired look for your upcoming event while making your shopping experience enjoyable and memorable. Our clientele includes brides shopping for their wedding day and weekend attire, mothers of the bride and groom, guests of the wedding, women attending formal events, and men looking for attire for any occasion. No matter who you are, we welcome you to A Little Something White as our friend, but you very quickly become a part of the ALSW family.

ph: 203-309-5110 | email: info@alswbridal.com | www.alittlesomethingwhite.com

FARROW & BALL[®] × CHRISTOPHER JOHN ROGERS
HANDCRAFTED PAINT AND WALLPAPER

CARTE BLANCHE



RingsEnd.com

Your Inspiration.

12 new shades, inspired by Christopher John Rogers' childhood memories of food and family.

Our Expertise.

Carte Blanche: A capsule collection of pattern and colour, handcrafted by Farrow & Ball. Available at Ring's End.

DESIGNER BARBARA BARRY
LIGHTING PAPER MOON LARGE HANGING SHADE
IN BRONZE WITH RICE PAPER SHADE
SHOP NOW VISUALCOMFORT.COM



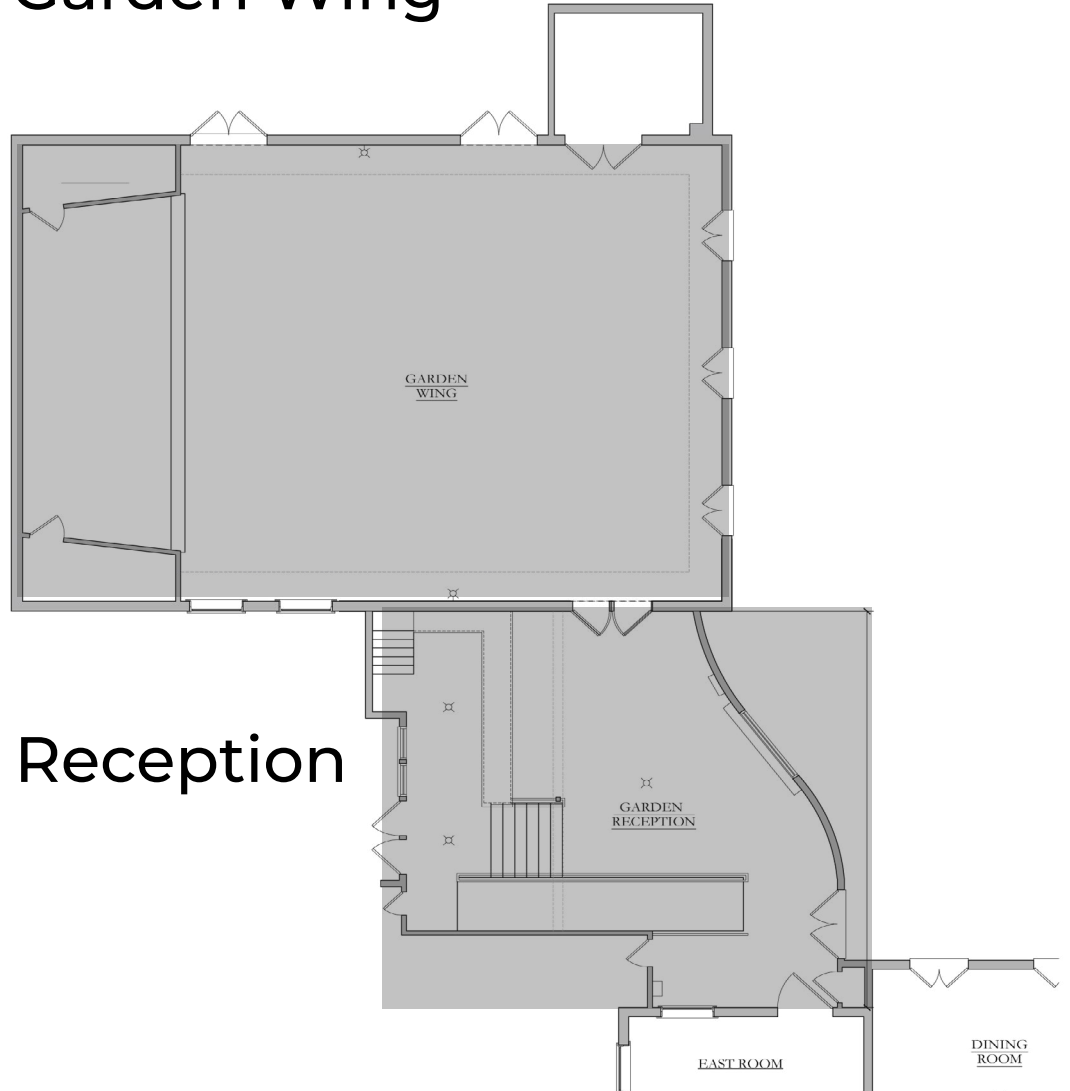
VISUAL COMFORT & Co.

24 WASHINGTON STREET, NORWALK, CT 06854 | 203.803.1518
21 WEST PUTNAM AVENUE, SUITE A, GREENWICH, CT 06830 | 203.622.1417

The DCA 203 Project | Showhouse 2024 **10.**

Showhouse Map

Garden Wing

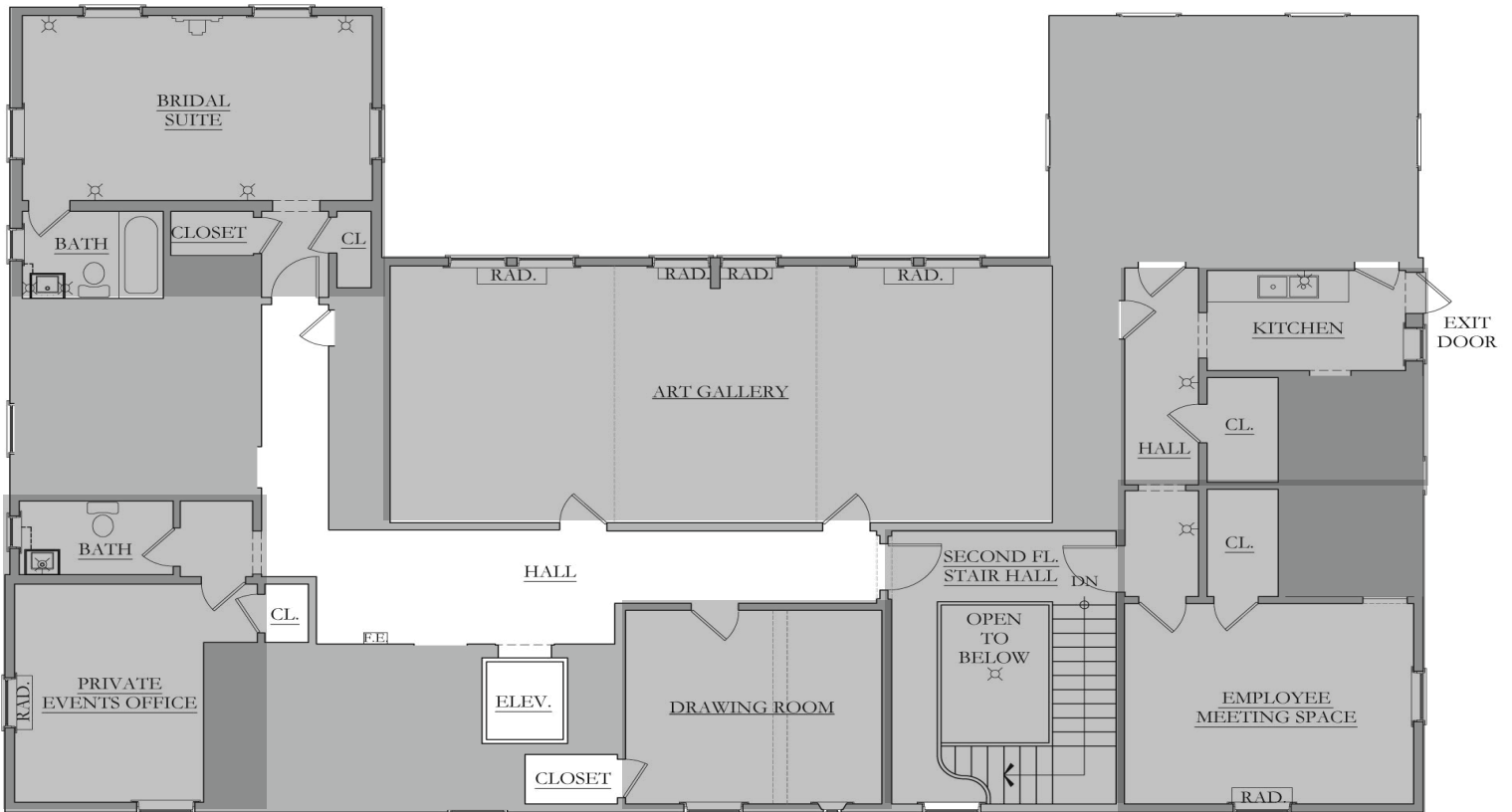


Garden Reception

First Floor

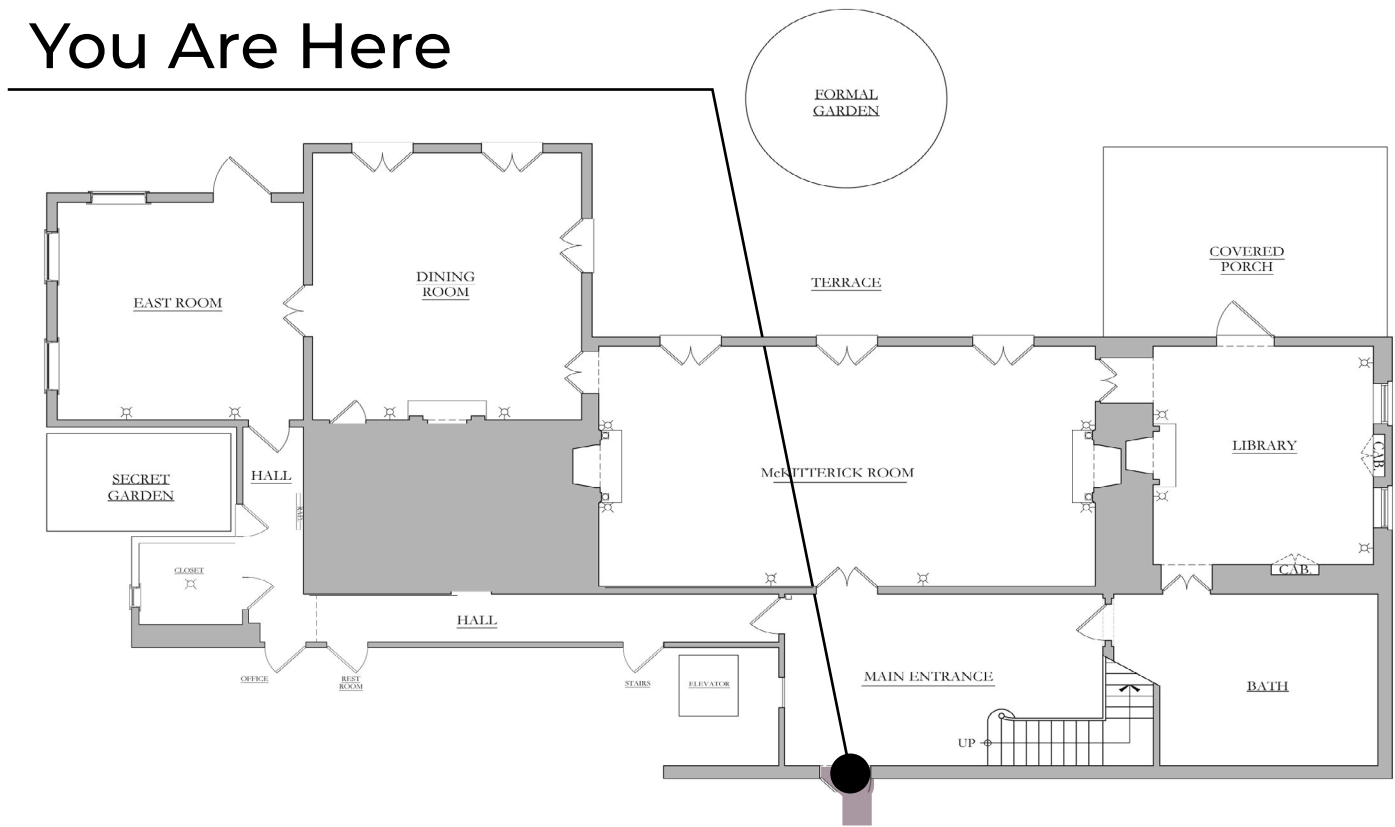


Second Floor



Front Door

You Are Here



Meet the designer



Nielsen's *Florist and Garden Shop*

Founded in 1944 by Hilda and Christian Nielsen, Nielsen's Florist is a one-stop shopping and event destination is still owned and operated by their granddaughter, Sandra Nielsen-Baumann. Visit them to get inspired, work with our designers, and shop botanical concepts that are on-trend and friendly to kids, pets and the planet.

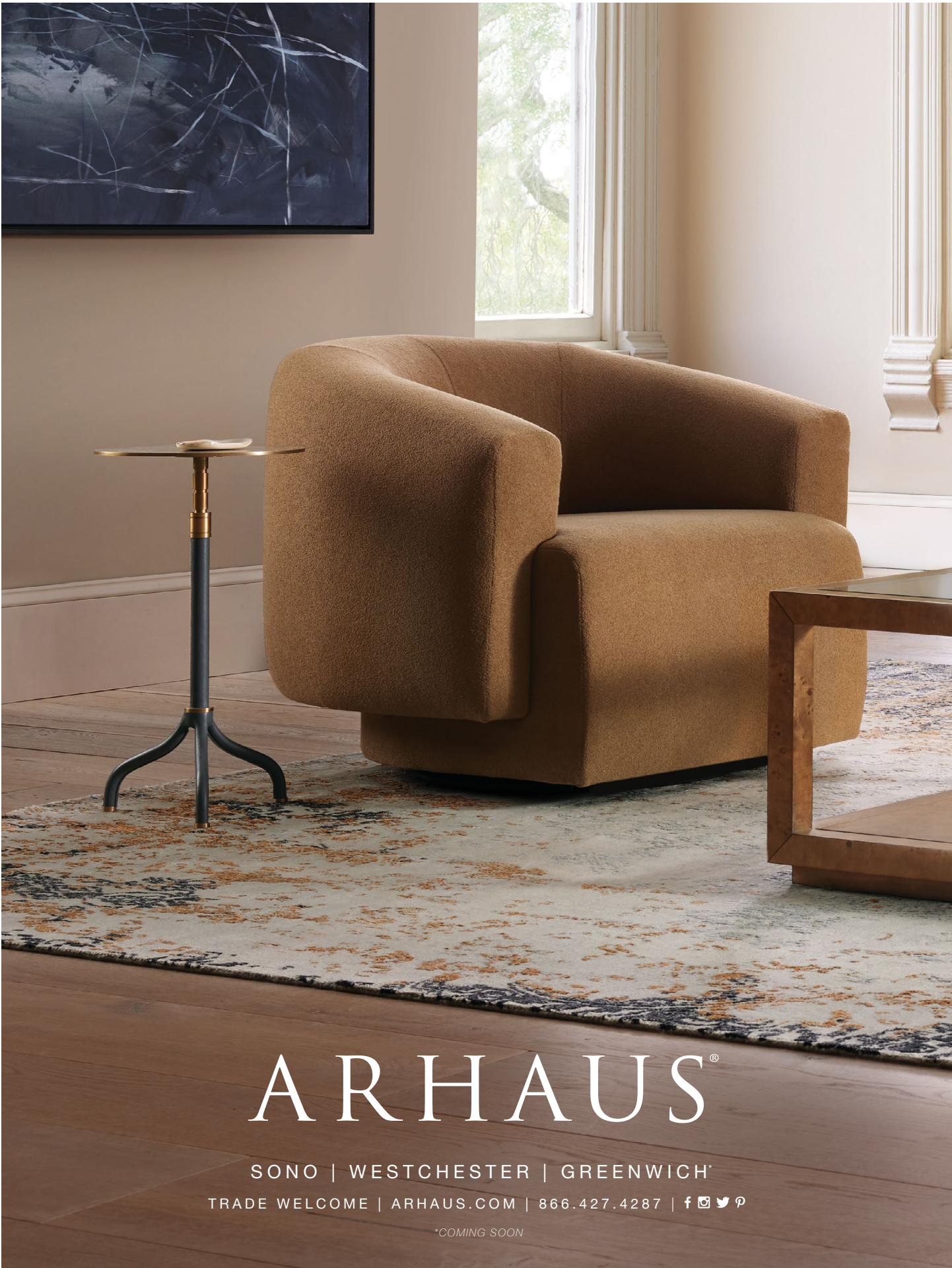
Showhouse Map

Itinerary



“In recent years, we have been sharing our floral talents by creating spontaneous floral displays in community shared spaces and this year, we are focusing our talents on the DCA event.”





ARHAUS[®]

SONO | WESTCHESTER | GREENWICH

TRADE WELCOME | ARHAUS.COM | 866.427.4287 | [f](#) [i](#) [t](#) [p](#)

**COMING SOON*



BMW of Darien

Family Owned. Customer Driven.

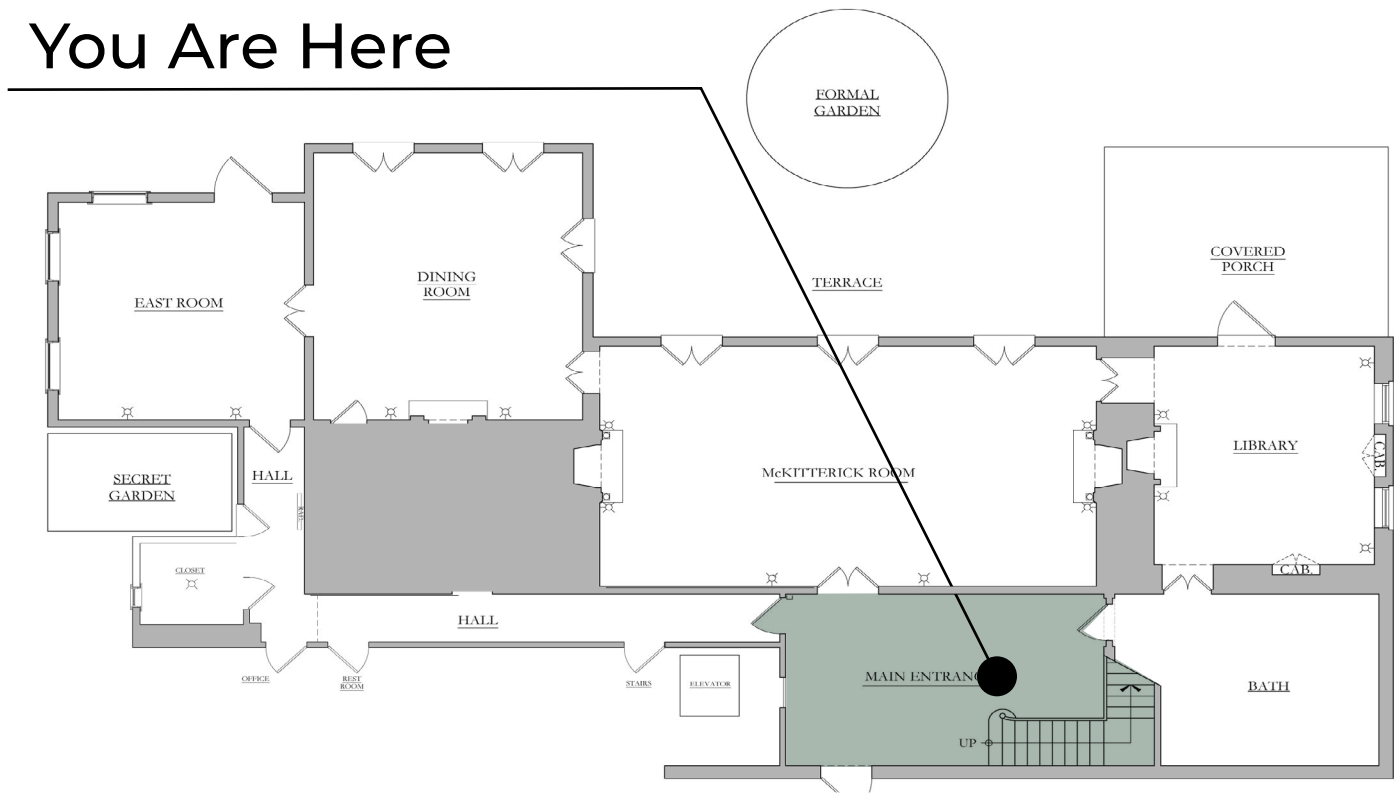


The 2024
BMW X7

The 2024
BMW X2

Main Entrance

You Are Here



Meet the designer



Prudence Bailey

of Prudence Home and Design

Prudence launched Prudence Home and Design as a full-service interior design firm to provide polished, effortless and fresh interiors that blend modern and traditional styles. Prudence works closely with each client to understand their vision, goals and lifestyles so that each home tells each client's unique story. Prudence believes the biggest mark a home can have is not only its beauty but how it makes everyone who enters its walls feel. The results are inspirational yet functionally elevated spaces.

Showhouse Map

Itinerary



“For the main entry, I wanted to design a grand entry for the DCA reminiscent of the gilded age but in a more modern way.”



Community Connection



I have lived in Darien for the past 14 years and the DCA has always been an iconic place in our community. [When John Ruddy of Ruddy Builders heard that Prudence was refinishing the floors in the main entrance, he felt strongly that the metal grates should be replaced with inlaid wooden ones, and he offered to do that for her. Prudence and John soon realized that years ago their daughters played on the same sports team and had even carpooled to games.

Sustainability Story



Sustainability means so much to me in many different ways. I am using the grand mirror in the entry way hung above a gorgeous console table and flanked by beautiful lamps. [The architectural drawings of the formal gardens designed by Ellen Biddle Shipman have been reframed by Geary Gallery.] Additionally, I am reusing the mirror that was hanging in the second floor vestibule only now it will be anchored by a vintage bench I had painted and upholstered. I love breathing life back into pieces that may have been overlooked before or just weren't in the right spot. Having said that, I see the overall design as sustaining through the years to come which is so important.



Bambi Riegel

Photographer

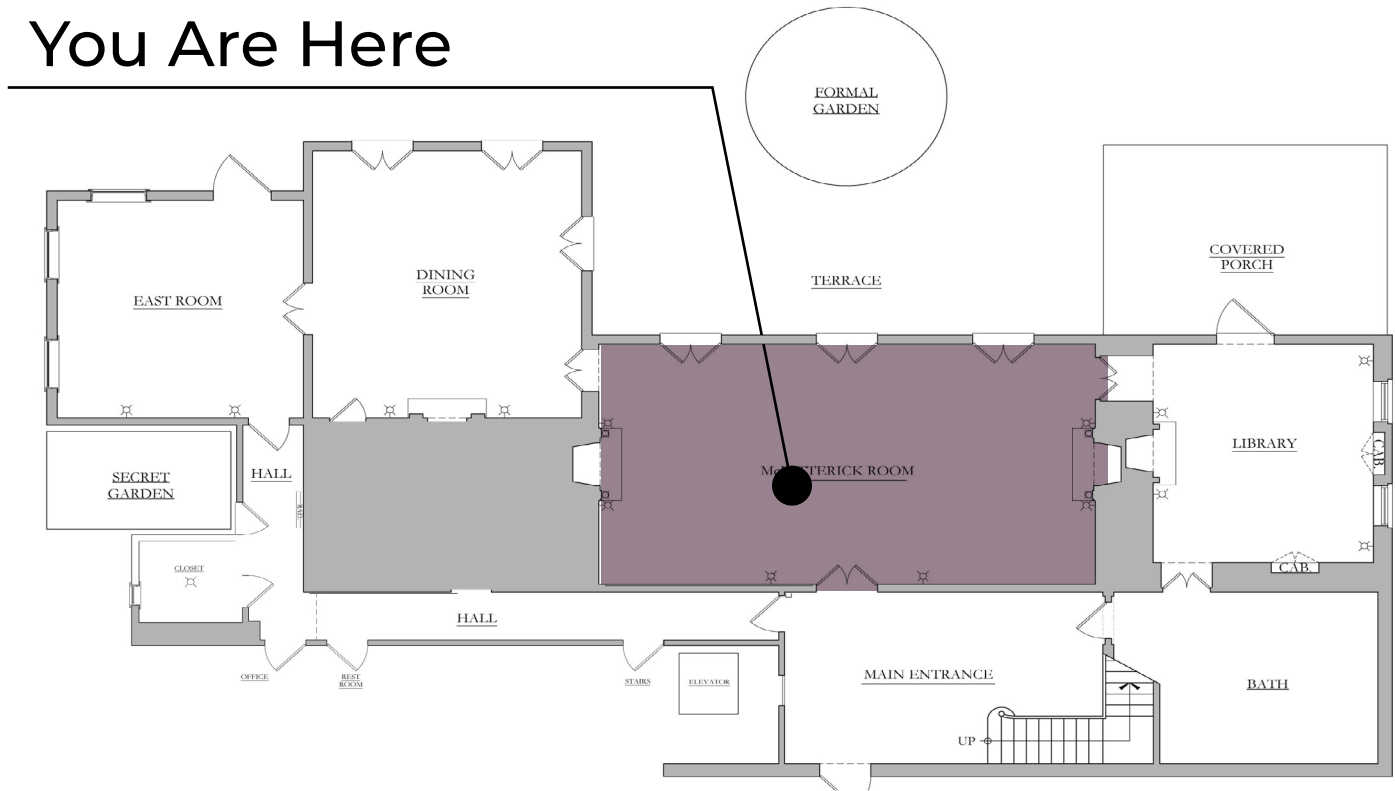
Portraits • Events • Landscapes



riegelpictureworks.com

McKitterick Room

You Are Here



Meet the designer



Carey Karlan *of Last Detail Interior Design*

Award winning interior designer Carey Karlan is the principal of interior design firm Last Detail located in Darien, CT.

Since founding her firm 20 years ago Carey has been creating timeless interiors throughout Fairfield and Westchester Counties extending to Manhattan, San Francisco, Florida, the Cape, Nantucket and the Hamptons.

Showhouse Map

Itinerary



“I was inspired to do a garden themed room upon seeing the 3 lovely French doors leading outside to the formal gardens... When I came upon Schumacher’s beautifully colorful classic garden urn print, Aylesbury Vase, I knew I’d found my palette.”



Community Connection



I have lived in Darien since the 4th grade and my five children attended all of the local public schools. For many years, I lived right around the corner from the DCA and enjoyed passing it every day as it made me feel I was lucky to live in such a lovely neighborhood! I have attended wedding receptions and parties there as well. A memorable experience was giving my first big professional talk there: "Don't Just Downsize...Modernize" to a large audience--I really felt like I'd arrived! Russell Melzer, an artist who lived in Darien for many years, created the series of four large scale original watercolors - one for each season. They were created specifically for the room.

Sustainability Story



We kept the 2 mirrors over the fireplace. They are lovely and I could not improve upon them. We also kept the hardware for the draperies which was a good savings.

Bee in the Know with the Darien

CHAMBER OF COMMERCE



@darienCTchamber

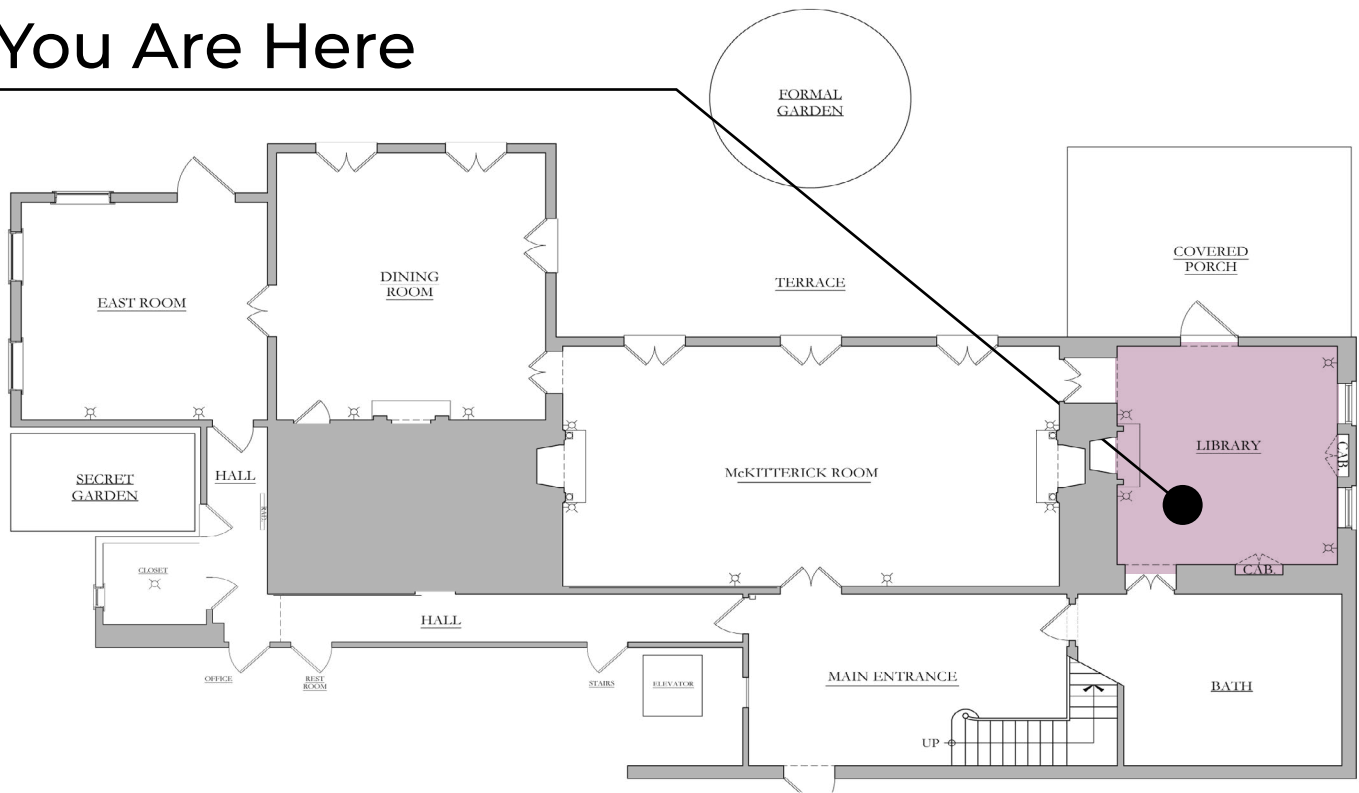
www.darienCTchamber.com



Congratulations to the DCA! We are proud to support our members and their endeavors!

Library

You Are Here



Meet the designer



Kelly Interiors

Mother Daughter Design Duo

Christine Kelly

Christine has specialized in residential and commercial interiors for over 30 years. She has completed design projects across Connecticut, Florida, South Carolina, The Hamptons and throughout New England.

Catherine Kelly

Catherine has always had a passion for design, with a background that includes over a decade of experience in the luxury fashion industry. While working for esteemed brands including J. Mendel, Max Mara, and Brunello Cucinelli, Catherine collaborated closely with design and production teams. This provides her with a vast knowledge and understanding of different fabrics, materials and aesthetic.

Showhouse Map

Itinerary



“We hope the space greets visitors with a welcoming invitation to stay a while and enjoy a soothing and serene retreat.”



Community Connection



Christine has been a resident of Darien for 37 years, and Catherine was born and raised in Darien so we both feel a strong connection to the DCA. Catherine has wonderful memories of spending time at the DCA growing up, including celebrating her high school graduation there. Christine has long been involved with the DCA, helping with small decorating projects over the years, so she is thrilled to get her hands on a full room! We are both so happy to create a space that will be used by members of our special community, and that helps the DCA continue its positive impact on Darien through the many educational and cultural opportunities they offer.

Sustainability Story



We are thrilled to be able to repurpose some beautiful pieces that have been donated to the DCA from members of our community over the years. We are reupholstering a sofa as well as two beautiful chairs that just need a little love to bring them back to life!



THE GURUS OF GARDENING

OUTDOOR & INDOOR PLANTS

annuals, perennials, shrubs, natives, tropicals, vegetables, herbs, houseplants and more

GARDENING CENTER

indoor and outdoor pottery; organic lawn and garden soils, fertilizers, insect and disease control; seeds and bulbs

CONTAINER DESIGN

four-season design services for home and business

HOME DECOR & GIFTS

garden accessories, jewelry, crystals and more

PLANT & GARDEN EXPERTISE

ask our gurus anything!



OPEN DAILY 9-5

(203) 655-2549

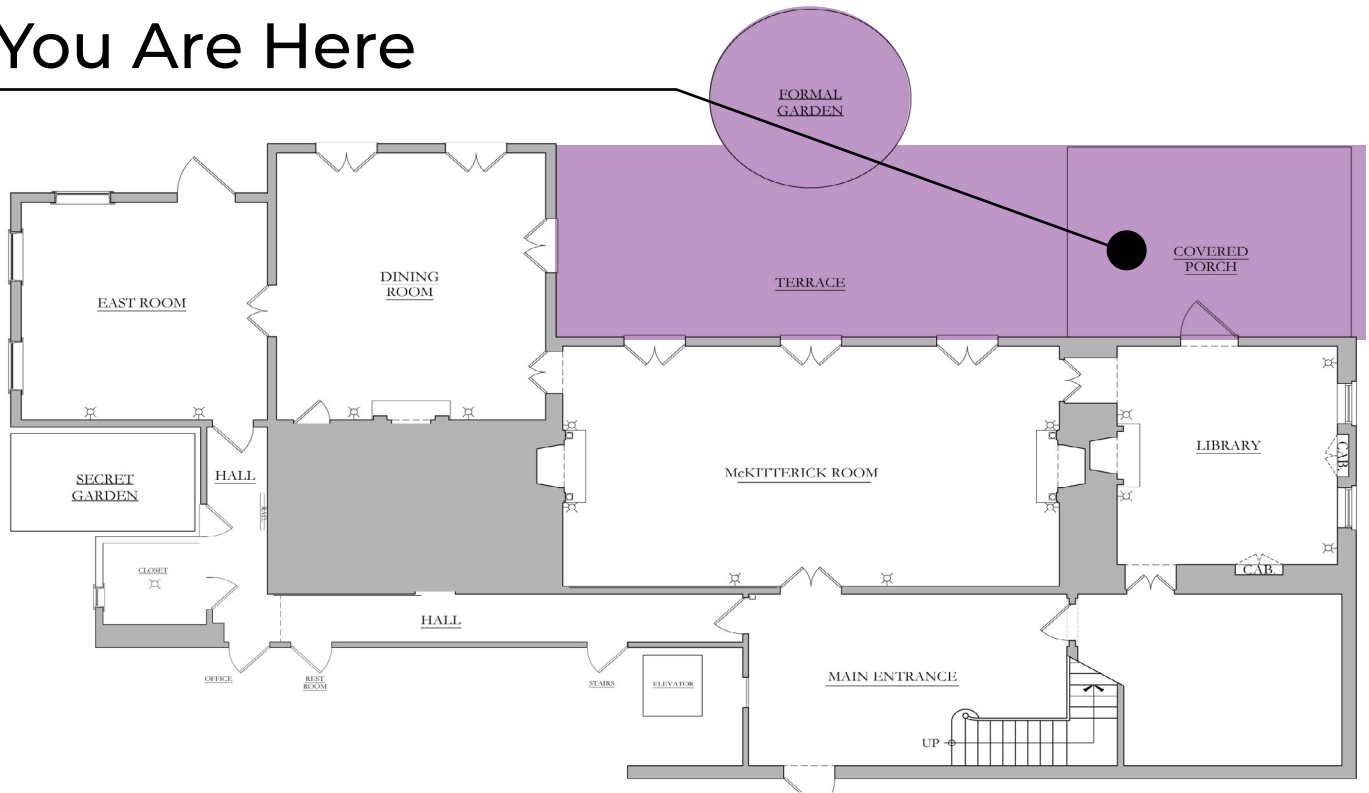
GardenersCenter.com



[thegardenerscenter](https://www.thegardenerscenter.com)

Terrace

You Are Here



Meet the designer



Jessica Matteson

of Matteson Landscape Architecture

Jessica is a classically trained landscape architect and principal of her full-service, award-winning firm Matteson Landscape Architecture. With over 20 years of experience, Jessica is widely known in the Northeast for curating experience-driven residential and commercial outdoor spaces. Jessica masterfully blends the science of landscape with joie de vivre to create one-of-a-kind landscape experiences and is recommended by top architects, interior designers, and discerning clients.

Jessica has a Bachelor of Science in horticulture (B.S.), Master of Landscape Architecture (MLA) and a minor in real estate, all from Cornell University, where she continues to do research on many aspects of the built environment.

Showhouse Map

Itinerary



“Nestled within the lush embrace of a courtyard designed by the renowned garden designer Ellen Biddle Shipman..”



Community Connection



I have many friends, colleagues and clients in Darien, and although I reside in Southport, I regard Darien as an integral part of my extended Fairfield County family. This project has been an opportunity to strengthen those bonds.

Sustainability Story



In our quest to furnish the terrace both beautifully and sustainably, we've leaned heavily on antiques, second-hand finds, and locally-sourced furniture, reducing the need for imports and thus minimizing the carbon footprint of each piece. The Balinese umbrellas, sourced directly from Bali, are an exception. These are not drop-shipped but brought over by the supplier on their infrequent trips to the island, purchased directly from the artisans who craft them by hand. Moreover, we've introduced native shrubs to and around the terrace, further enhancing our commitment to sustainability.



WESLEY MOON INC.

OBSIDIAN REFRIGERATION BY JENNAIR®

Escape from tired convention with the most provocative Column refrigerators in the industry. Daring Obsidian interiors, Ecliptic lighting, Trinity cooling, Divinity freezing and Progressive smart-home integration - Sculpted with Glass and Metal because luxury isn't plastic.

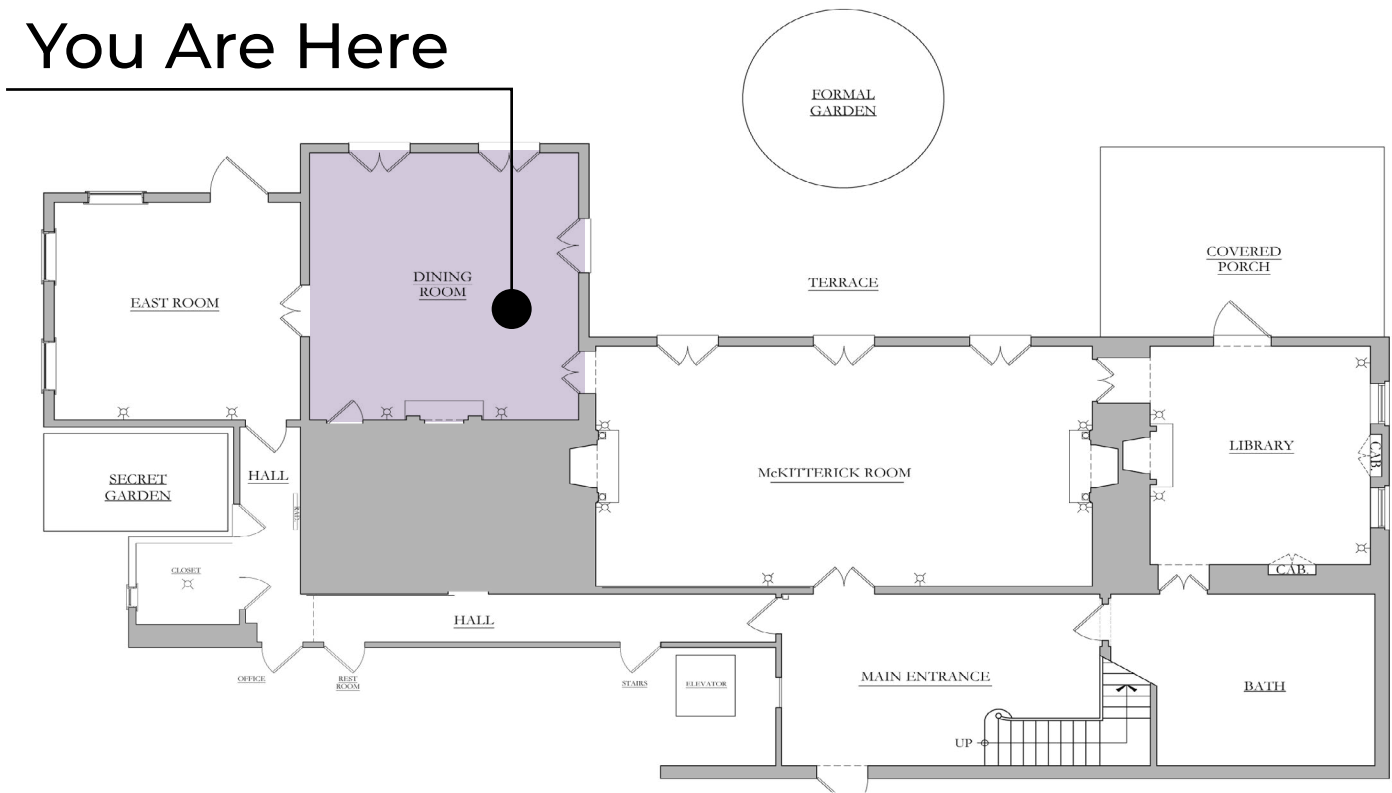
JENNAIR.COM | 150 EAST 58TH STREET 4TH FL NEW YORK NY 10155

*Appliance must be set to Remote Enable. WiFi & App required. Features subject to change. Details and privacy info at jennair.com/connect.



Dining Room

You Are Here



Meet the designer



Sarina Galu *of Sarina Galu Interiors*

Sarina turned her lifelong appreciation for architecture and interior design into a “passion career” in 2013, after spending 20 years as a marketing executive working with top national consumer brands.

With creative vision and self-taught technical skills, Sarina can masterfully create inspiring finished spaces. Unaffected by popular trends, she designs timeless spaces defined by a layered mix of textures, tones, patterns and furnishings. None of Sarina’s projects look alike because she designs for each individual client.

Showhouse Map

Itinerary



“I envisioned a young family living in the space when I was refreshing the room. I reimagined the dining room to be fresh, happy and youthful.”



Community Connection



The birds on the wall that had a mural (painted by three local artists, Lisa Thoren, Lori Leckliter, Chris Filmer) inspired me with colors for the space and I was also inspired to carry the mural around the room to the other walls and the ceiling in the room. I have attended wonderful teas at the DCA with my girlfriends over the years and my older son who is in college now attended the cotillion when he was young.

Sustainability Story



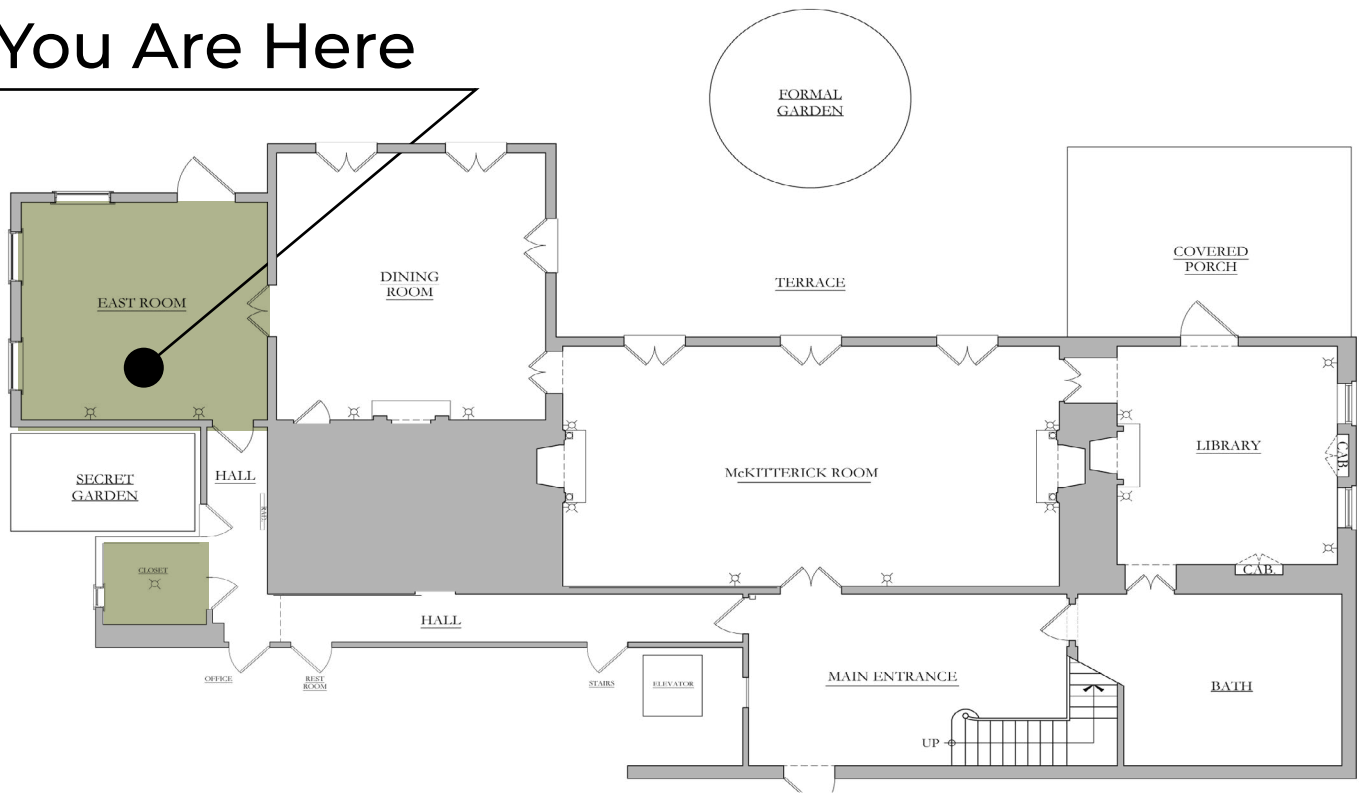
I repurposed the drapery panels and created a beautiful custom fitted tablecloth for the table. I purchased a sweet vintage bench seat on Facebook Marketplace for \$25 and refurbished it. We call it the "Gertrude Bench" because it had originally belonged to a Gertrude who lived in CT. Her family members were so touched that her bench found a home at the DCA. There are numerous other vintage accessories in the space.



21 ELM STREET NEW CANAAN, CONNECTICUT
203.972.0433 | THELINESHOPCT.COM

East Room & Closet

You Are Here



Meet the designer



Fiona Leonard *of Fiona Leonard Interiors*

Fiona Leonard Interiors, LLC is a full service design firm that specializes in making a client's home unique and custom tailored to the owners taste and lifestyle. Projects are personally supervised from initial consultation to installation. Strong relationships with carefully selected creative artisans, highly skilled craftsmen and subcontractors ensures that your project will be in good hands.

With over twenty years experience working alongside well established design professionals in Connecticut and Manhattan, Fiona Leonard Interiors, LLC was established.

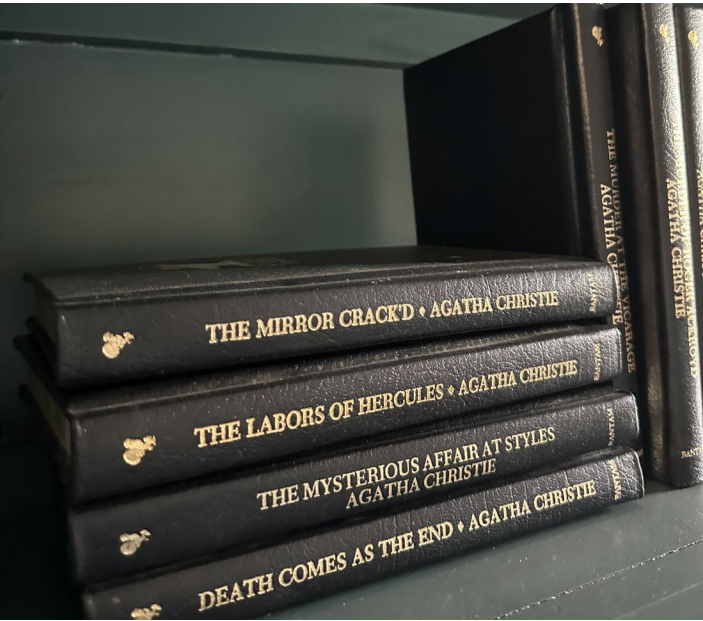
Fiona designs interiors with a casual elegance and timeless approach. Inherent in all her work is Fiona's passion to combine clean lines and an artistic use of color that is comfortable for the client and reflects their personal lifestyle.

Showhouse Map

Itinerary



“The East Room was designed to give a warm welcome to all who enter. Not only is it a room to walk through but it is a room to meet a friend, have a conversation, read a book or sit and knit with some friends.”



Community Connection



Fiona's connection to the DCA started in 1976 when her mother, Marie Whitla O'Reilly, took an art class at the DCA. Her painting inspired Fiona's design! Marie shared the sweet story with us. "When I was pregnant in 1976, I took an art class at the DCA. The two-hour class was totally absorbing and the ambiance inspiring. In fact, years later, I often joked that my baby developed her artistic talents because of that class." Marie also took an upholstery class where "several of us lugged well-worn armchairs and sofas to the attic of the DCA." They "hammered away for weeks with remarkable results." The spirit of community and sustainability at the DCA and within its members shines bright.

Sustainability Story



An existing settee immediately caught my eye while touring the DCA. It was reupholstered in a plush indoor outdoor velvet by Perennials. We kept the existing piano, repainting it in Inchyara Blue by Farrow and Ball. The existing crown molding in the East Room was not obvious in its former state. With a warm wash of Setting Plaster paint by Farrow and Ball we not only highlighted the crown we made it glow in a soft shade of pink.



Navesink Wealth Management

An Independent Investment Consulting Firm



Peter Graham, Jr.
Financial Consultant



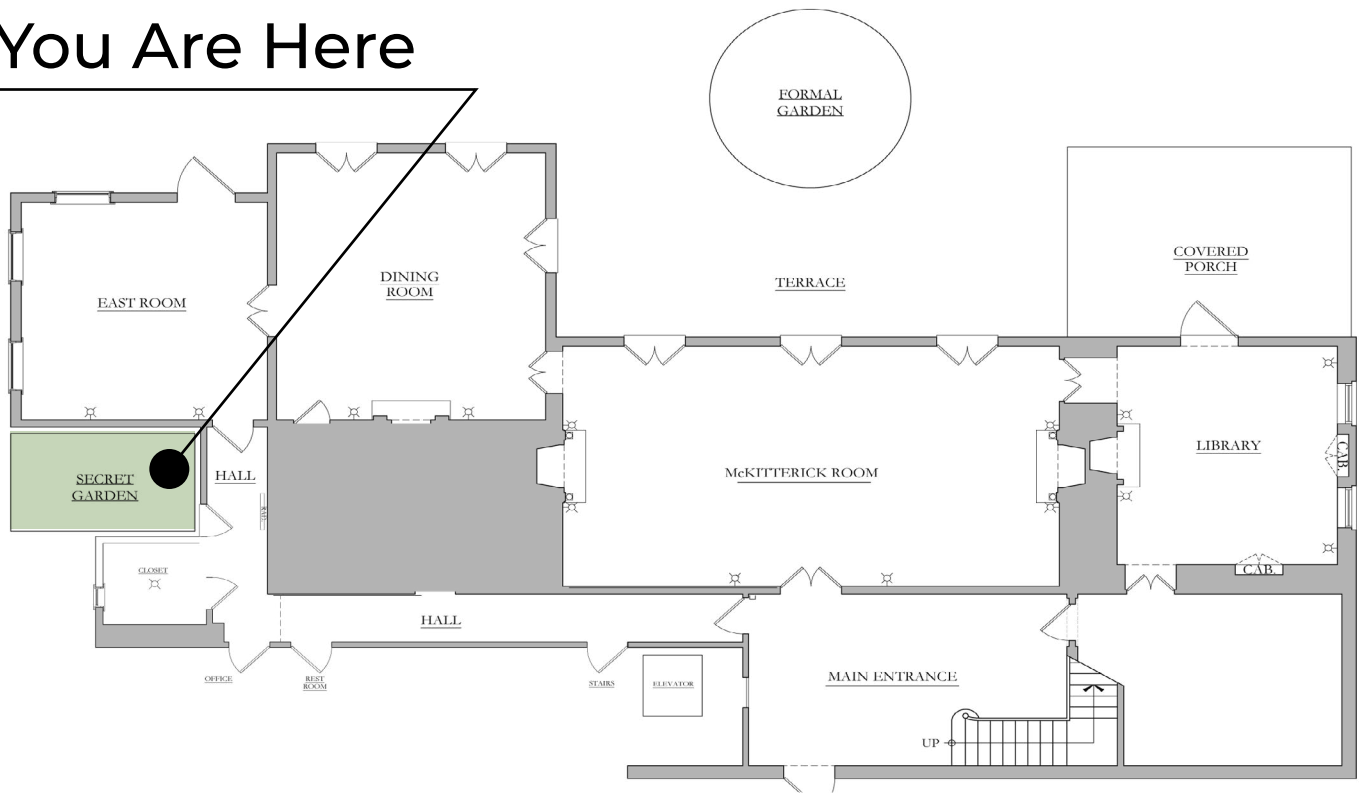
“Plan Wisely, You Won’t Get a Do-Over”

*(203) 964-7221
50 Washington Street
Norwalk, Connecticut 06854*

Securities and Advisory services offered through LPL Financial. A registered investment advisor. Member FINRA & SIPC.

Secret Garden

You Are Here



Meet the designer



Kelly McGovern *of Kelly McGovern Garden Design*

After working in the public affairs and advertising fields for several Fortune 500 companies, Kelly traded her briefcase for a good pair of gardening gloves and earned a certificate in Landscape Design from the New York Botanical Garden in the Bronx. She has been designing gardens for her clients all across Fairfield County and the Boston area for over ten years. She is particularly good at space planning, no matter the size of the project, and she has a finely tuned design process that keeps people knocking on her door.

“To borrow an old marketing phrase, I try to find the ‘best and highest use’ for the gardens that I work on. This involves getting really acquainted with the land, meeting all the family members who will use the space (including the four-legged ones), and taking note of the architectural style of the home and its interiors. Once I get a really good idea of what my clients want, what their property offers, and what will be appropriate stylistically, I can put together a plan that is functional, in tune with the environment, and is aesthetically beautiful.

Showhouse Map

Itinerary



“The ‘Secret Garden’ is an outdoor courtyard off the northeast corner of the main building, installed long ago by a local garden club and lovingly maintained over the years by DCA volunteers.”



Photo Credit: Photographers Name

Community Connection



After we thanked the overgrown trees and shrubs for all the joy and life they shared with us over the years, we said our good-byes one crisp winter's morning, took them out and sent them off to become compost. We split many of the existing perennials, transplanting small starts to containers that are being nursed in the greenhouse. The charming faux bois painted bench currently positioned against the warm south wall will be inspected for any loose joints and be repurposed in the new space. While not all of the new plants chosen are native to the US, they are all sturdy and dependable species for our hardiness zone, and have been grown in the northeast, which reduces the amount of fuel needed to transport them to their final destination.

Sustainability Story



Gault Family Companies supplies the Darien community with premier natural and manmade stone products. Their knowledgeable staff and skilled craftsmen guide professionals and homeowners through projects, no matter how big or small. Outdoor Design & Living is a design-build nursery and landscaping company that aims to help the residents of Darien and the surrounding areas get the most out of their outdoors. Kelly McGovern Garden Design is a boutique garden design studio that looks for the special story hidden in each of its commissions. Her work to uncovers the best use of her customers' spaces while developing beautiful and manageable landscapes.



CONNECTICUT

Since 1975

NEW YORK

NEW CONSTRUCTION • ADDITIONS & RENOVATIONS • PROPERTY MANAGEMENT



SAUGATUCK PARTNERS

203-834-1019
SaugatuckPartners.com
@SaugatuckPartners



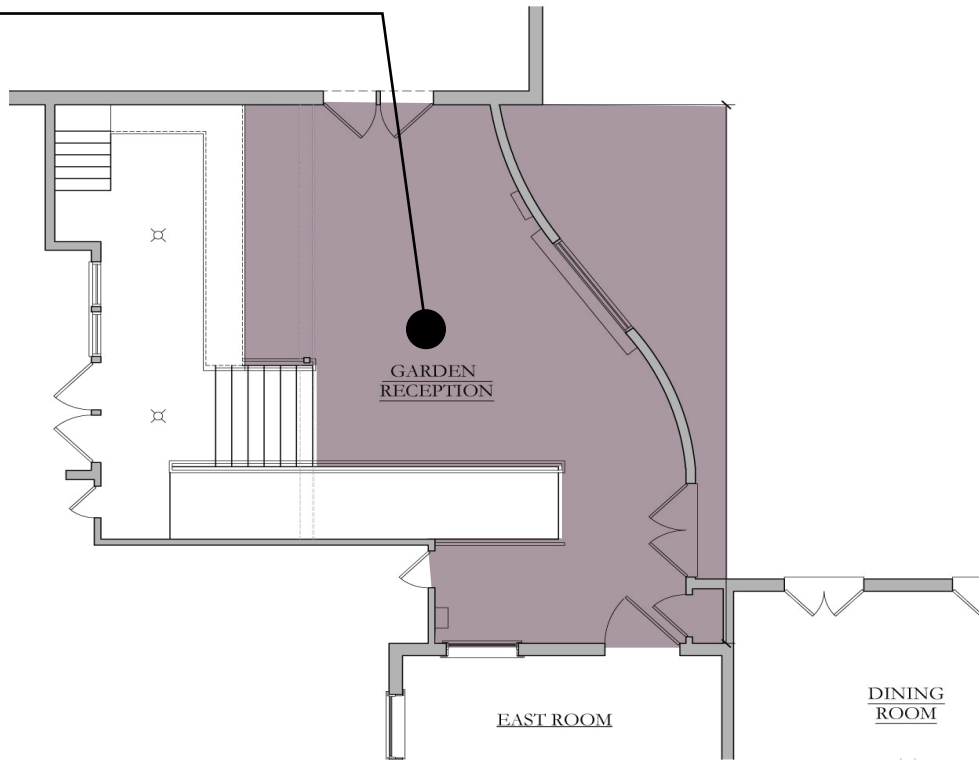
203-856-4648
TurnerPaintingService.com
@TurnerPaintingService

SAUGATUCK PARTNERS IS A DBA OF ROBERT TURNER BUILDERS, LLC

The DCA 203 Project | Showhouse 2024 **44.**

Garden Reception

You Are Here



Meet the designer



William Lyon *of William Lyon Designs*

“Design is not about conforming to trends; it’s a collaboration with the right designer who unveils your character by diving into the unexplored realms of creativity and expression inherent in each of us. The result is a home that authentically mirrors your identity, making it distinctly and uniquely yours.”

Interior designer William Lyon embodies this mission for his exclusive clientele. For him, the core of home design resides in crafting spaces that distinctly reflect the personalities of those who dwell within them.

Showhouse Map

Itinerary



“Inspiration was sparked when I found out the DCA has a garden club and an original greenhouse on the property.”



Photo Credit: Photographers Name

Community Connection



Inspiration was sparked when I found out the DCA has a Greenhouse Group and an original greenhouse on the property [a Lord and Burnham Greenhouse]. I was immediately inspired to create my dream greenhouse fantasy after seeing the slate floors.

William's designs have been reviewed by master gardeners and board members, Liza and Flora. He's connected to the DCA through a shared love of gardening.

Sustainability Story



In the Garden Reception, the sofa has been reupholstered and legs have been added to lift it to a comfortable seat height. The chair is from Kravet and has also been reupholstered. The window room dividers are repurposed from the DCA library and were originally doors to the built-ins. The 60" round table is an original design and Barry Joseph crafted it from reclaimed wood. Two of the carpets that we will be using are remnants from Classic Carpets. We are also reusing the lantern pendants in the coat area and have sourced a few accessories from the DCA Thrift Shop. Our signature candle vessels also double as a rocks glass and can be repurposed to enjoy your favorite signature cocktail.

TILE

AMERICA

Where Inspiration Surfaces



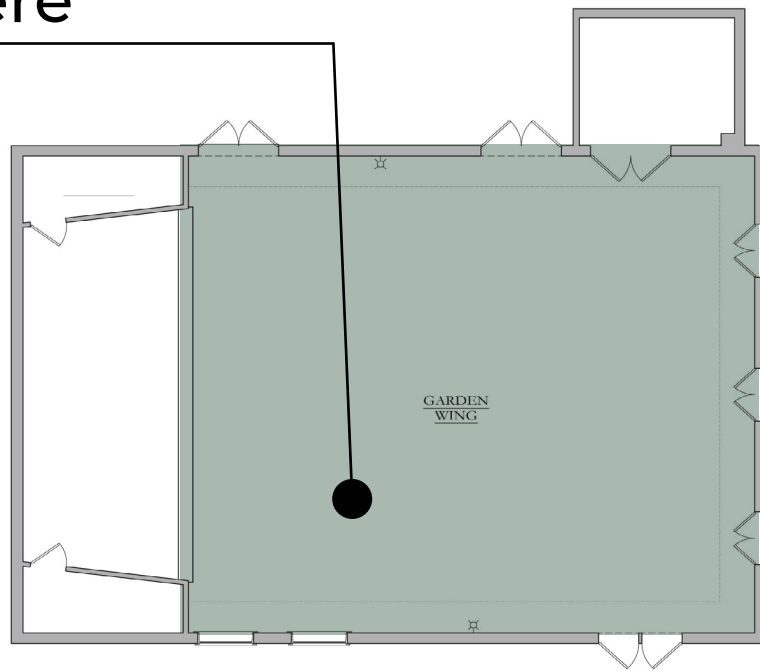
*Our seasoned design experts and exquisite showrooms
are ready to elevate your project.*

BROOKFIELD FAIRFIELD MANCHESTER NEW HAVEN
NEW LONDON STAMFORD WEST HARTFORD

Connecticut family-owned for over 60 years

Garden Ballroom

You Are Here



Meet the designer



Krista Fox

of Krista Fox Interiors

Krista's design career began with the study of interior design and interior architecture. Both degrees helped Krista establish a strong starting framework in architecture and design principles.

In 1994, Krista moved to Connecticut and established Krista Fox Interiors. Krista combined the foundational knowledge she'd gained over the years with a deeper understanding of design to explore how we can use it to inspire feelings and responses.

Today, Krista and the team at KFI are honored to help clients across the US define and design their dream homes.

Showhouse Map

Itinerary



“We chose a theme that fits with both the classic elements and garden setting of the mansion as well as the bright, clean natural feeling of Darien’s geographic relationship to the coast.”



Community Connection



Community, connections, growing, and learning are so important to our message and our work with our clients. It was such an honor to be selected to work on this space with this DCA and CTC&G team! The DCA has always represented a warm welcome to me. I came here when my family first moved from the city. I had a 2-year-old, I was pregnant. I knew no one and had never lived in the suburbs. New Mom and Newcomer events were a lifeline... and introduced me to some of my closest friends still today. We are so lucky to have this "gem" of a resource here in our backyard!

Sustainability Story



We are believers in reusing and repurposing. We reused the existing draperies and hardware to give them another chapter.



KALLISTA.

TORRSCO

BATH & KITCHEN
SHOWROOM

OFFERING DECORATIVE PLUMBING & LIGHTING,
VANITIES, CABINET & DOOR HARDWARE.

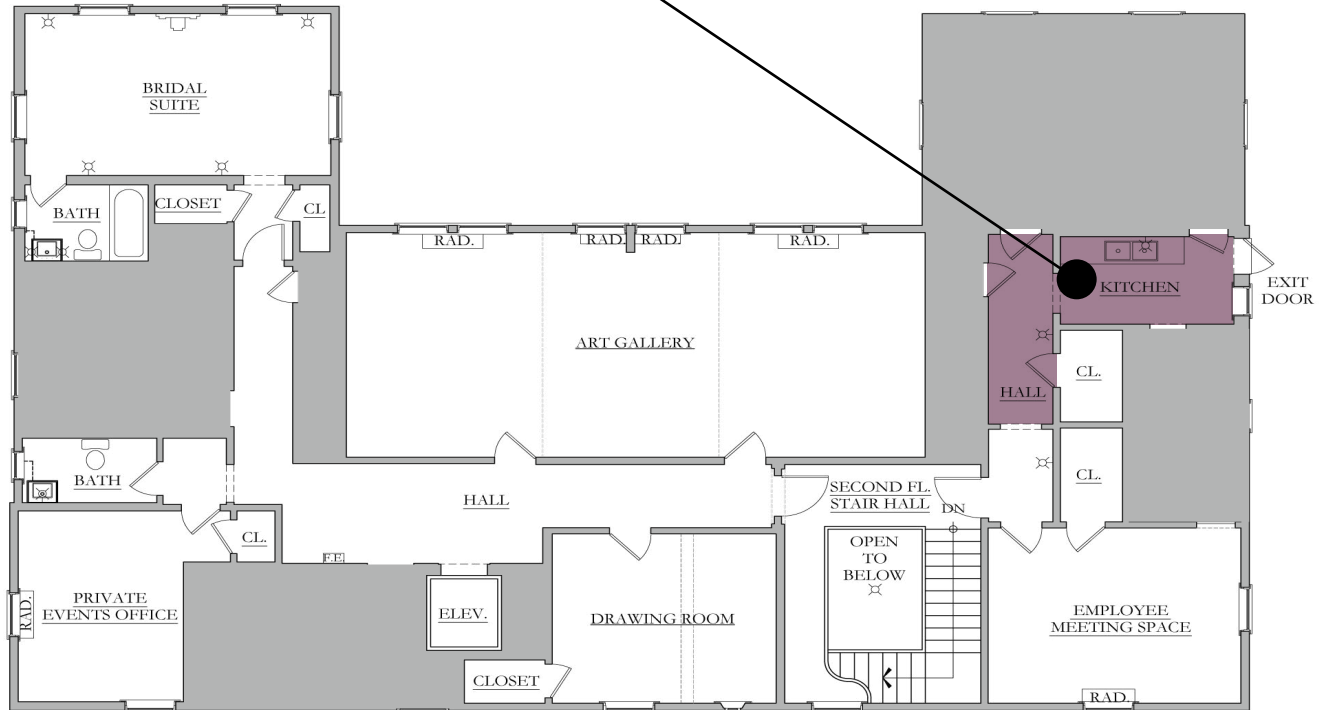
CONTACT US TO SCHEDULE AN APPOINTMENT.

Since 1917 • www.TorrcoDesignCenter.com • 203.479.6935

STAMFORD • FAIRFIELD • DANBURY • NEW HAVEN • EAST WINDSOR • WATERBURY

Kitchen + Hallway

You Are Here



Meet the designer



Karen Bow
of Karen Bow Interiors

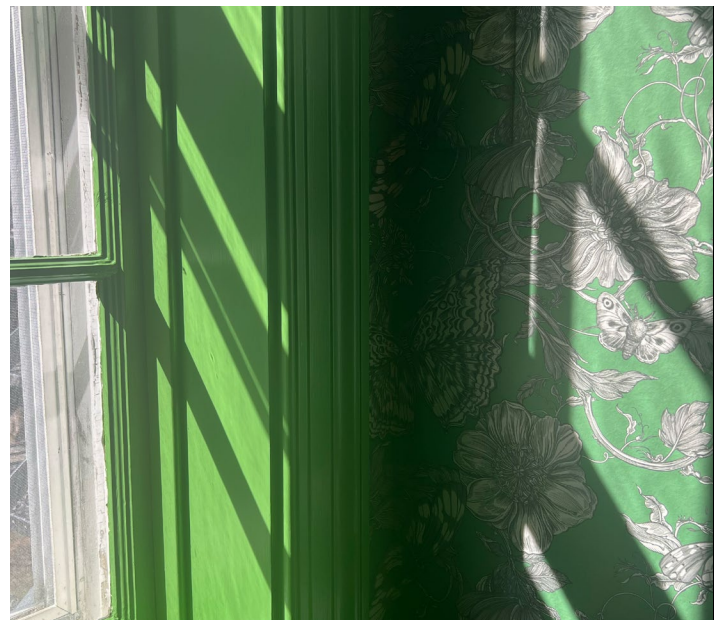
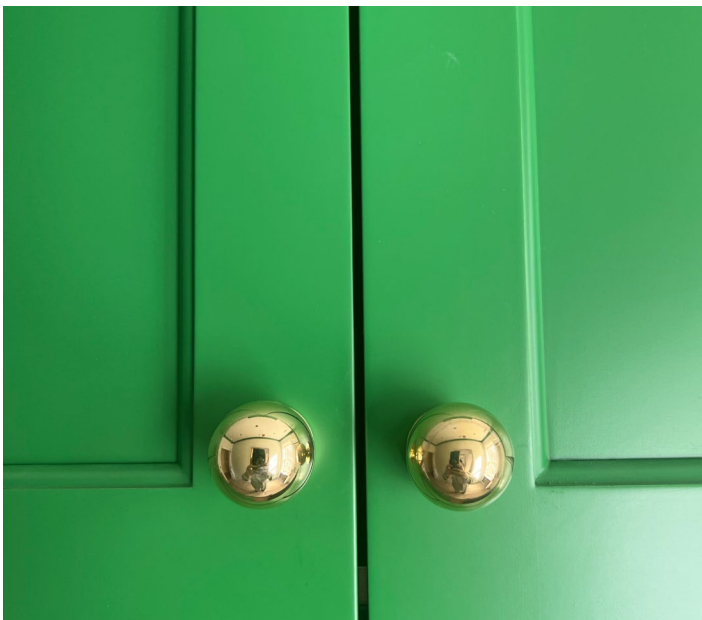
Drawing on her background in theater and set design, where inspiration and aspiration go hand in hand, Karen Bow works closely with each and every client to discover what they want and need their home to be, and how best to bring that vision to life. Arriving at a defined vision statement together, they then proceed with a proven design strategy that captures the big picture and nails the small details to create the perfect space for the most important people—you and yours.

Showhouse Map

Itinerary



“ The Wall Street Journal recently wrote an article, “Enough of the All White Kitchen.” As much as I love a white kitchen, I love a kitchen with color even more! Echoing the cheerful English kitchen inspiration with a mix of classic and contemporary choices, we committed fully to the color green.”



Community Connection



After spending time with the staff in the last few months, I have seen their kindness and graciousness firsthand. I can't begin to share what an amazing experience working on the 203 Project has been. Having lived in Darien for 28 years, I have heard many stories about events at the DCA. One of my favorite clients in Darien got married at the DCA 30 years ago. Our cabinet maker for the Staff kitchen, Sterling Custom Cabinetry, has a son who got married here recently. So, to hear memories of people that are personally connected to these moments, deepen my connection. I drive by the DCA multiple times a day, and it is more than just a house. It is a home that can bring people together.

Sustainability Story



It was a priority to focus on the sustainability for this kitchen. The floor is reclaimed, engineered oak, so no trees had to be destroyed, and no heavy machinery had to be operated to create the planks. Our butterfly wallpaper is printed on recycled paper, and a water-based ink is used which dries faster and does not produce any toxins into the air. The clay tiles used in the backsplash were donated from a private client. They are made up of finely ground cement and sand and natural pigments that are easily recyclable. All appliances are energy efficient, reducing the amount of energy needed to operate. The beautiful marble countertop was harvested from a local stone yard, a remnant piece from a past project. The beautiful green paint is a no-VOC paint by Farrow & Ball that is green-sealed standard with responsibly sourced ingredients.



Save the Date

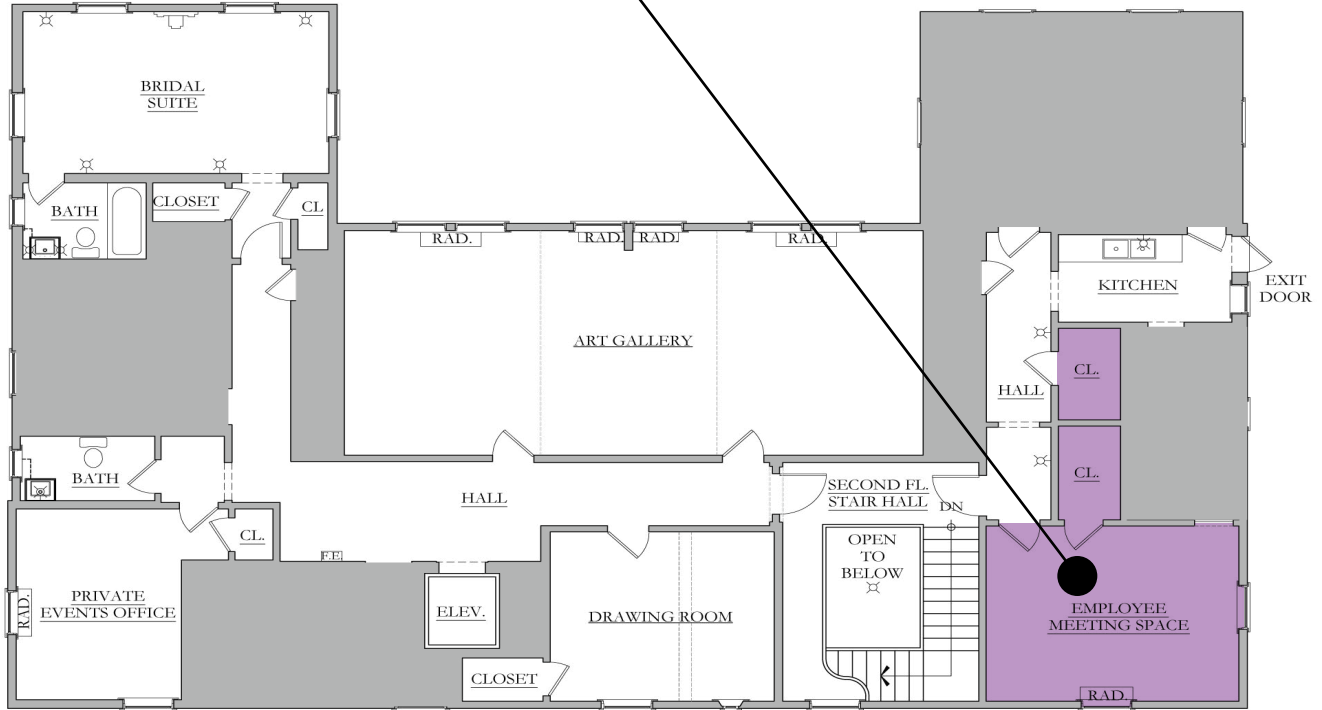
THE DARIEN COMMUNITY ASSOCIATION
PLANT SALE

Friday, May 10th

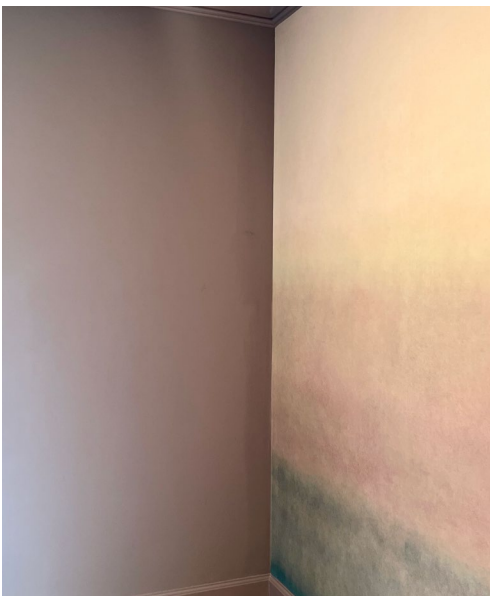


Employee Spaces

You Are Here



A Collaborative Effort Among Designers



These spaces are used most by the employees of the Darien Community Association. In the employee meeting space, the team gathers to plan community events, from lecture series to nature walks and holiday teas. The green closet is perfectly arranged with supplies for calligraphy classes and an easter bunny costume, while the hallway closet stores our office supplies.

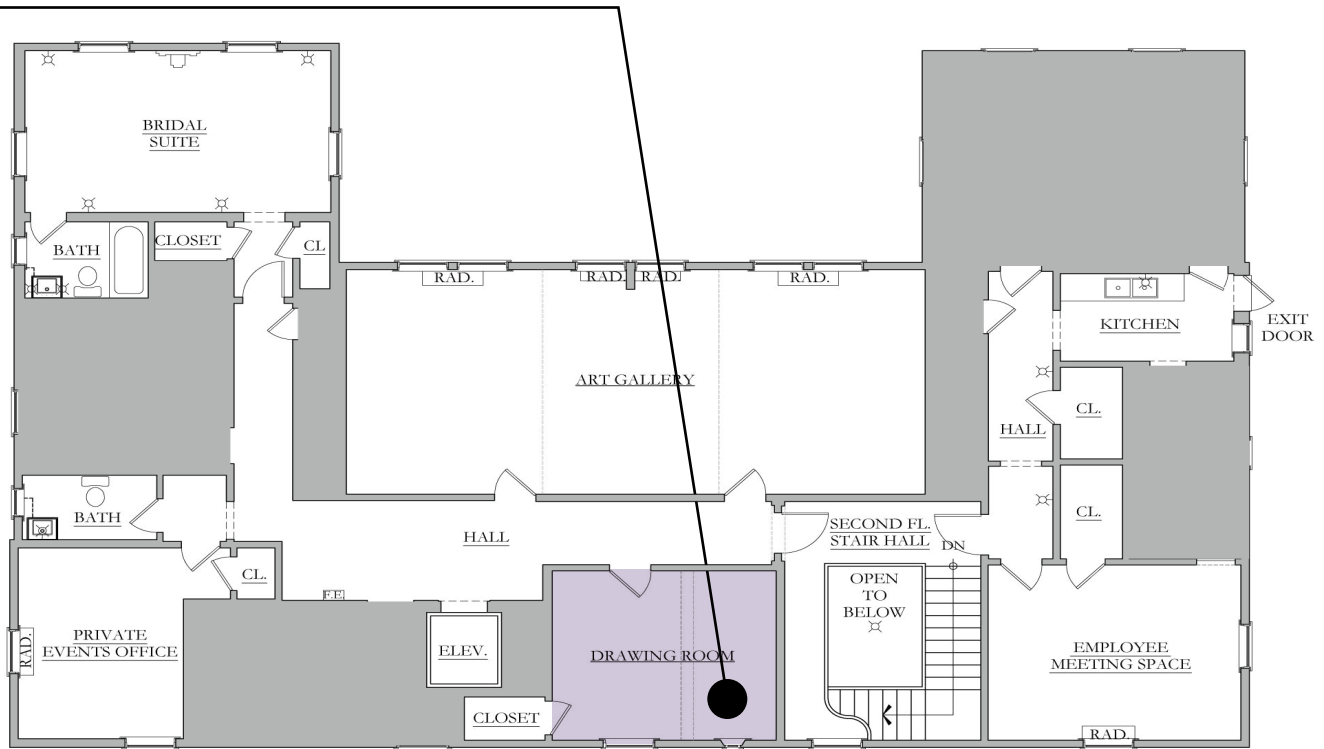
Showhouse Map

Itinerary



Drawing Room

You Are Here



Meet the designer



Joanne O'Neil *of JG O'Neil Designs*

JG O'Neil Designs is a full-service Connecticut based firm offering interior design, decorating and art advising services. Joanne strives to create modern interiors that are sophisticated yet livable and unique to each client's needs. Her aesthetic is traditional and modern day pieces seamlessly blended with vintage and antique finds. Combined with her love for art and her attention to detail, each room is one-of-a-kind.

Joanne's six years at the Flinn Gallery in Greenwich sitting on the Selections Committee curating exhibitions, studies in interior design, an undergraduate degree in business & economics as well as art, and a background in finance and client services, all help inform her strengths in art and design and the client-designer relationship.

Showhouse Map

Itinerary

[Click here to see full list of credits for this room](#)



“I enjoy using both antique or vintage pieces in combination with new pieces in my design, not only for sustainability, but because it makes a room feel more welcoming and not too precious. I love the marks of age, I think it gives a piece character and makes it interesting.”



Community Connection



My story or connection to the DCA started with this showhouse! I am now learning about its offerings and the different groups that meet here. In fact, I ran into my mother-in-law's cousin when I was there for a design meeting. He raised his family in Darien and is a member of one of the men's groups that meets at the DCA regularly. He was telling me how great the DCA is and was excited to hear about (my participation in) the showhouse. The DCA is the only spot in town where you will find a men's group meeting alongside a knitting club, an ASID class, and someone planning their upcoming wedding. It's a truly unique space and I am excited to now be a part of it.

Sustainability Story



I repurposed a floor to ceiling mirror that has all of the beautiful natural crackling in the silver from age behind the glass. I converted a closet into a dry bar to give people a place to have a drink. The shelves in the bar will have some glassware I picked up from the DCA Thrift shop. The stone slab is a remnant. I also grabbed two leather club chairs, previously in the library, to use in my seating arrangement, as is. The leather is already nice and worn and comfortable. I sourced an antique French Empire dresser, circa 19th century, a vintage Mies Van Der Rohe Style Brass and Glass coffee table, and a vintage Adrian Pearsall Lounge Chair chair. Finally, I am making an effort to source locally where possible - shorter shipping distances are kinder to the planet!

Proud Supporter of
THE 203 PROJECT

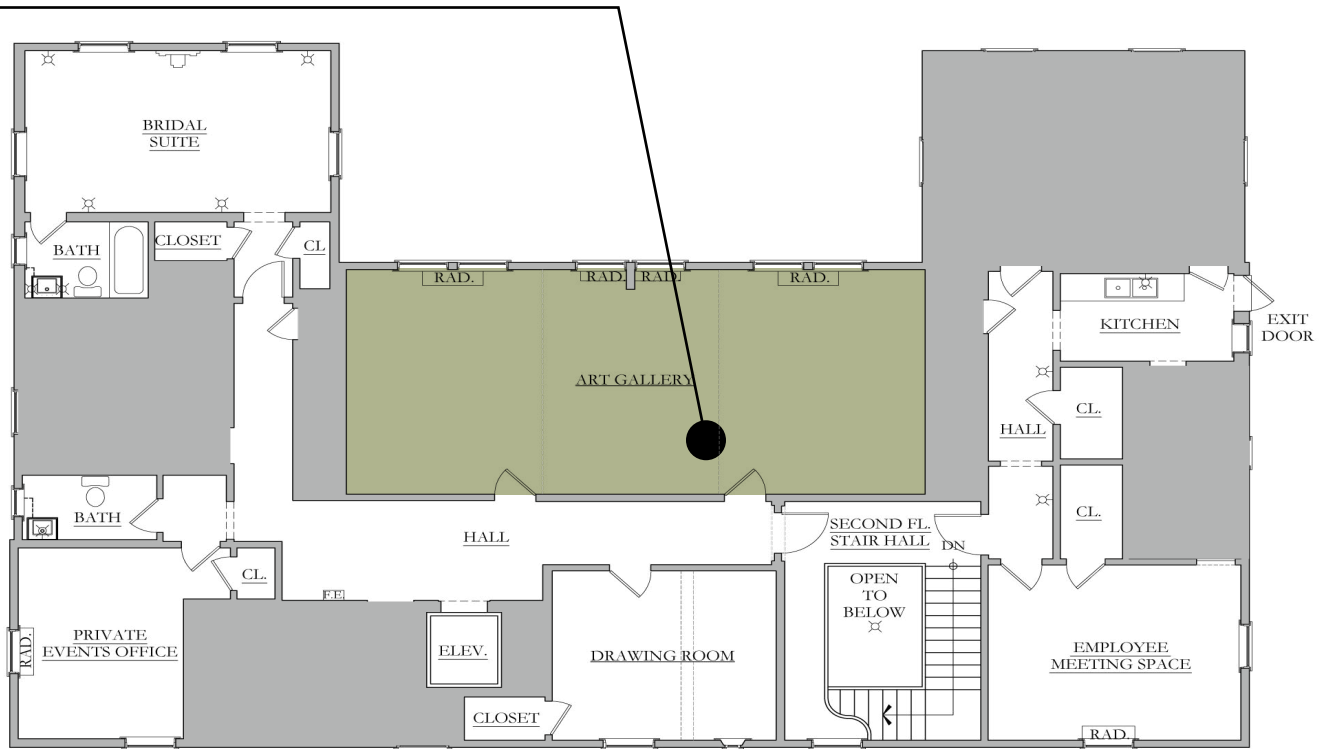


The Darien
Community
Association

THRIFT SHOP
996 Post Road | Darien

Art Gallery

You Are Here



Meet the curator



Mary Manning

Mary Manning is the curator of the DCA's Pop-Up Art Gallery on the second floor. An award-winning artist and Darien resident since 1983, Manning passed her talents and love for art to her son, Ryan Wallace, who today is an internationally acclaimed artist and gallerist. Wallace received the prestigious DCA art scholarship in 1995. It enabled him to attend the Rhode Island School of Design. In celebration of The 203 Project, Ryan Wallance's work is for sale with all proceeds benefiting the DCA.

[Showhouse Map](#)

[Itinerary](#)



Leaves Turn Inside You II, 2023
Ryan Wallace

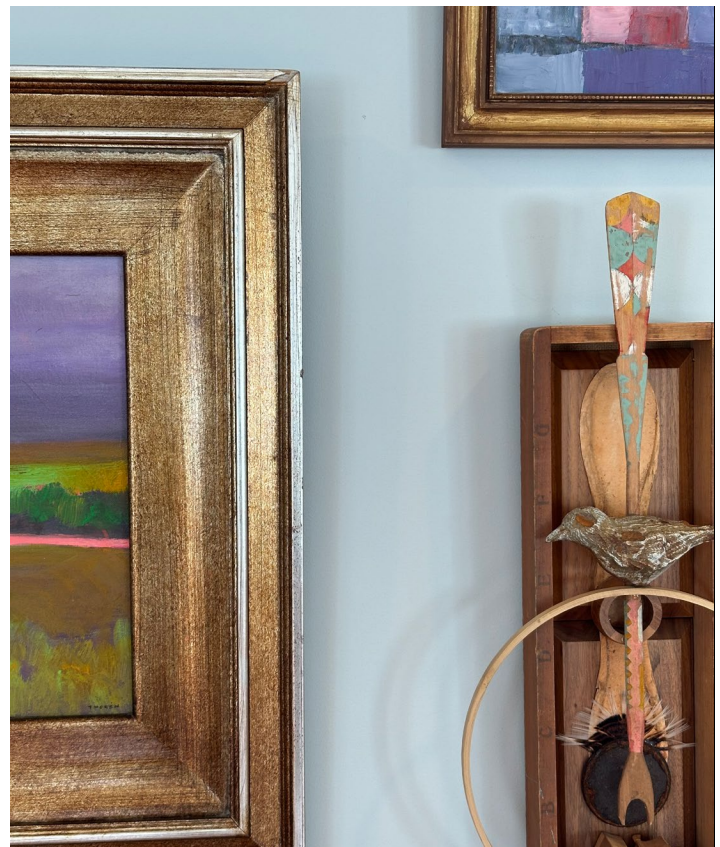


Atatakami, 2023
Katie Southworth

A Pop-Up Art Gallery curated by Mary Manning

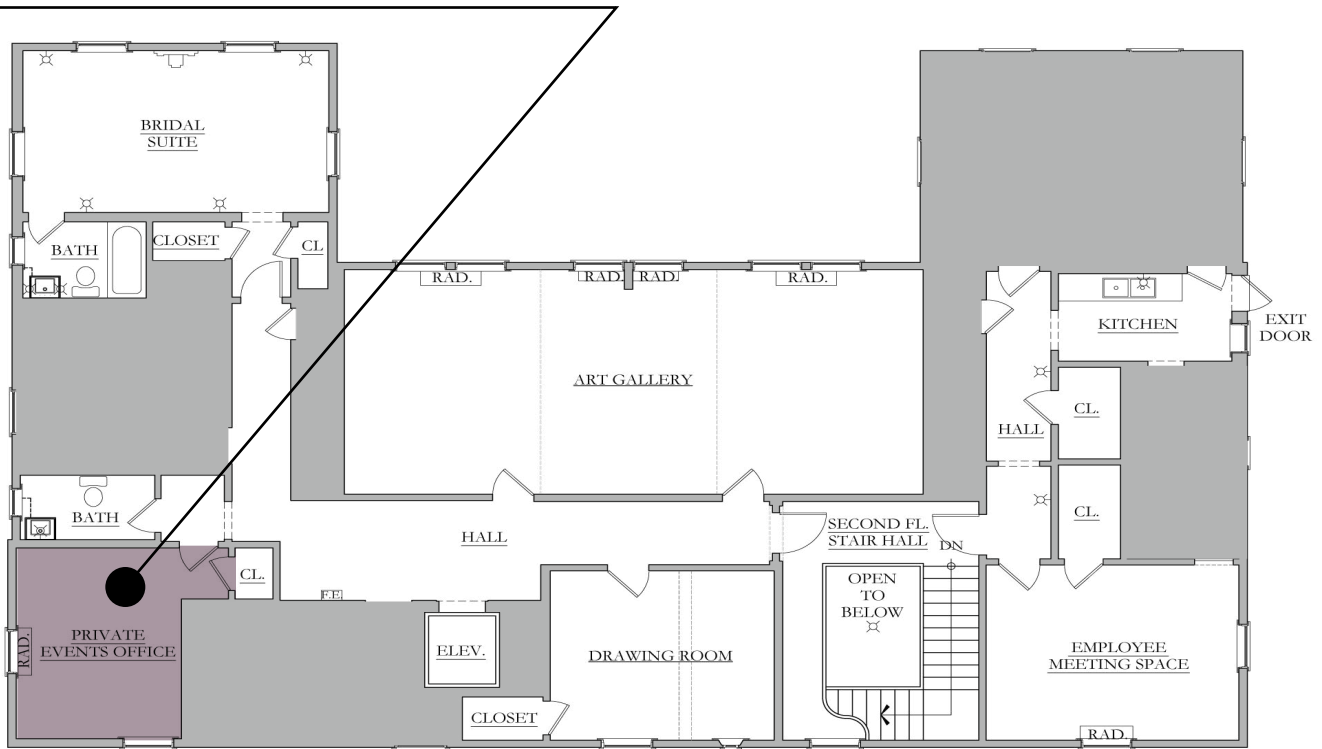
Featured Artists

- | | |
|-----------------------|--------------------|
| P. Andre Arguimbau | Dorothy McClure |
| Peter Layne Arguimbau | Mary Morant |
| Donna Collins | Bambi Riegel |
| Carol Conze | Katie Southworth |
| William Davis | Lisa Thoren |
| Chris Filmer | Meg Tweedy |
| Lori Glavin | Karen Vogel |
| Hanneke Goedkoop | Diane Weeks |
| Dana Goodfellow | Kathleen Weinstock |
| Elizabeth Higgins | |
| Cate Leach | |
| Lori Leckliter | |
| Pam Lindberg | |
| Cara McCabe | |



Private Events Office

You Are Here



Meet the designer

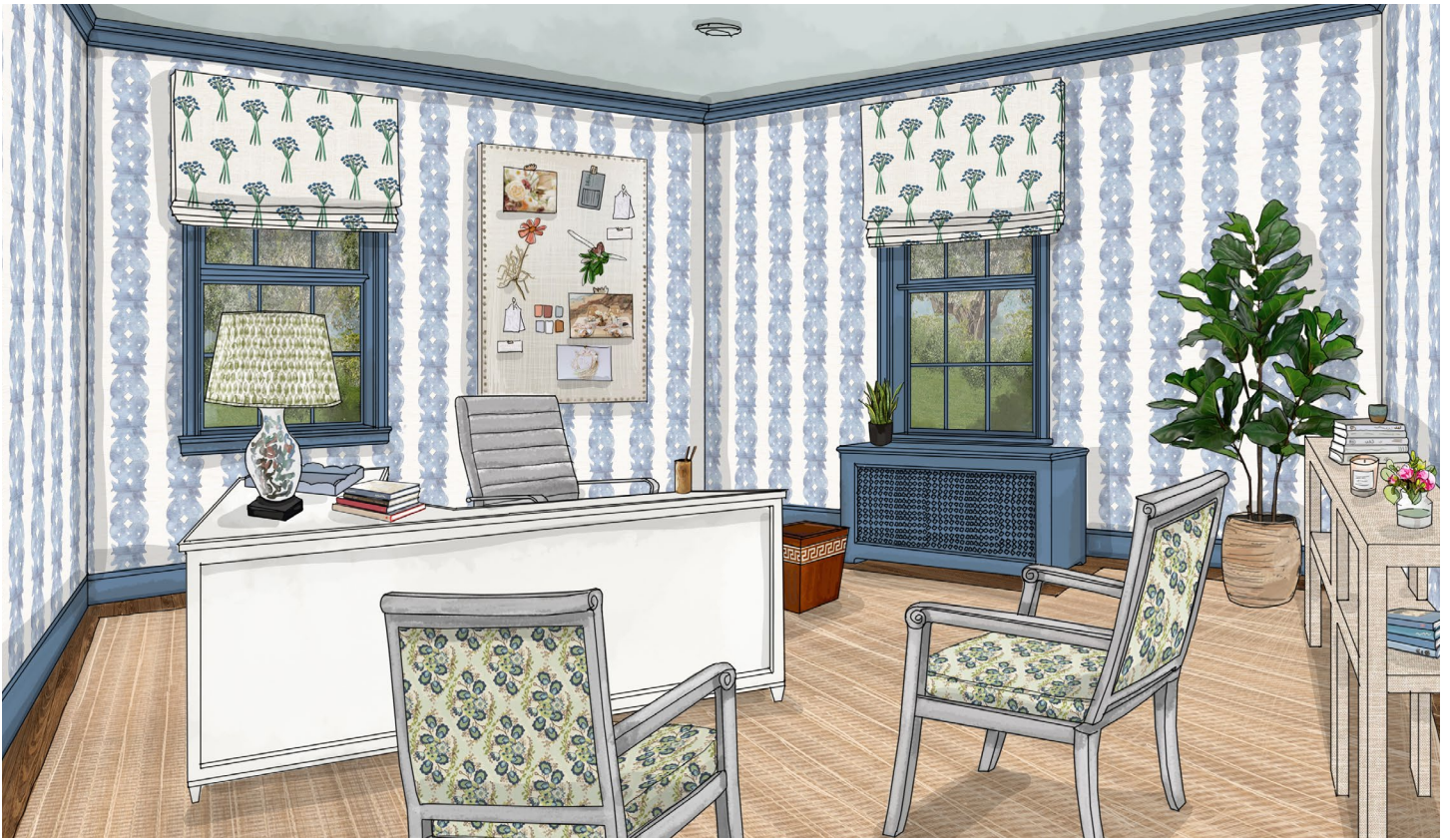


Alicia Sands Tiberio *of Dorset and Pond*

Alicia Sands Tiberio has over 15 years of experience in the interior design field. Having worked in antiques-to-the-trade, an internationally acclaimed lighting design firm, and as a senior designer for an award-winning Connecticut-based design firm, she now operates her own custom design business as well as Dorset and Pond. She has undergraduate degrees in art history from Hobart and William Smith Colleges and interior design from The New York School of Interior Design.

Showhouse Map

Itinerary



“I wanted this space to be bright and happy using blues and greens and patterns that are both interesting and beautiful, as well as uplifting.”



Community Connection



Alicia first visited the space during the Design Social Pop Up and was able to connect with so many others in town through this project. Turner Painting heard about The 203 Project, saw that Alicia was a part of it, and reached out to her! Evan and Alicia went to the same college.

Sustainability Story



I'm a huge proponent of using vintage and antiques in my designs - I was able to reuse 2 chairs from the existing space by painting them and recovering them with new fabric. The mirror in the vestibule is vintage and the console is reused.



STONE & LANDSCAPE SUPPLIES

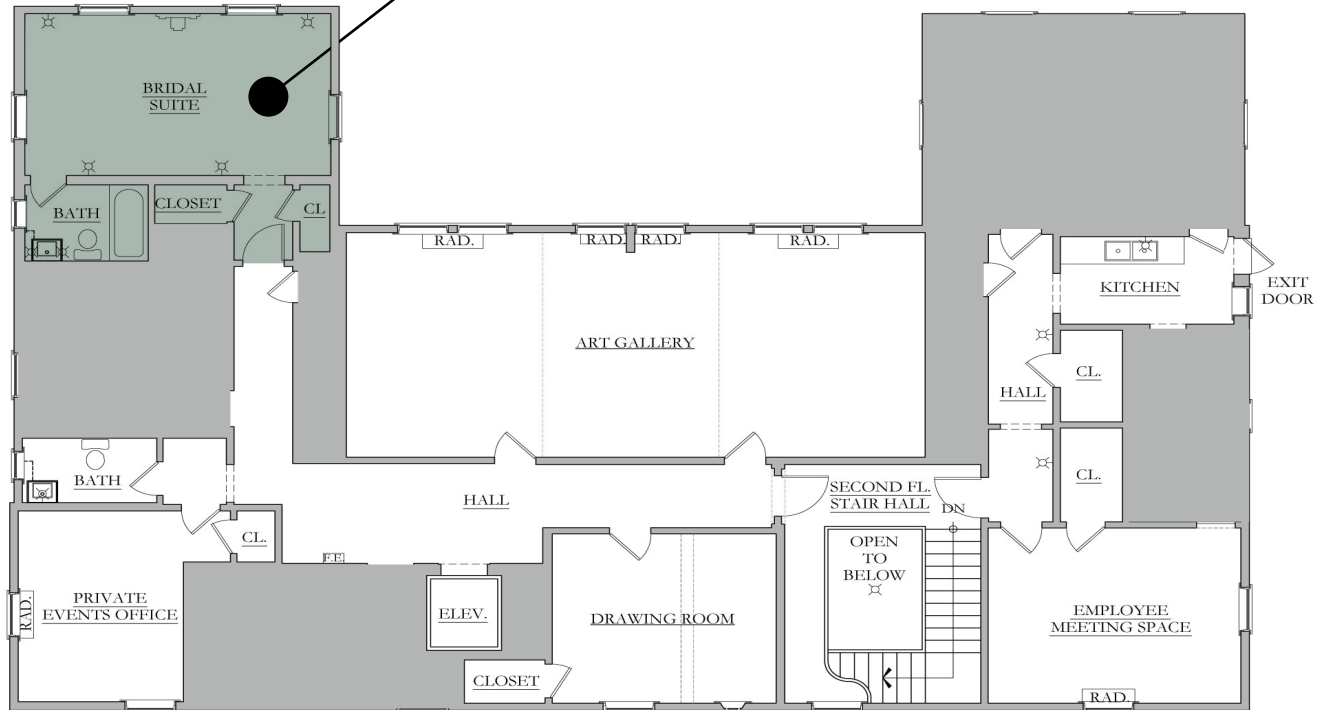
WESTPORT SHOWROOM
203.227.5181

BETHEL SHOWROOM
203.790.9023

gaultstone.com

Bridal Suite

You Are Here



Meet the designer



Elena Phillips *of Elena Phillips Interiors*

Believing that creativity is a collaborative process, Elena Phillips partners closely with homeowners and their families to ensure their individual tastes and lifestyles are reflected in the environments she creates. Phillips specializes in a 'new traditional' aesthetic, one that mixes the essentials of both traditional and modern design creating approachable and comfortable environments. Her seamlessly integrated design elements result from working closely with architects, builders, landscape architects and skilled artisans.

Showhouse Map

Itinerary



“On a trip to Paris I purchased the book Dior by Mats Gustafson, an artist who was approached by Dior in 2012 to create watercolors of their collections. The femininity of the dresses and the painterly manner reminded me of the Bridal Suite for The 203 Project. I very carefully cut out a few pages and had the watercolors professionally framed!”



Community Connection



I grew up in Rowayton and my mother, back in the 80's, volunteered at the DCA. She worked on the search committee to help secure guest speakers for the lecture series, now called the GLocal Issues Speaker Series. And as an adult, decades later, my children all visited the nature trails at the DCA with their nursery school. We are so lucky to have the DCA in our community as it serves so many people across generations.

Sustainability Story



We repurposed the large mirror that was leaning against the wall in the previous bridal suite. We refreshed the existing mirror with a new frame. We also refreshed the existing doors in the room. They are solid and well made. We decided to remove the paint-covered hinges and mix-matched door hardware. We added new unlacquered brass hinges and door hardware that will patina over time. The doors look fresh and the hardware is an accent piece like "jewelry"!

**Thank
You!**



The Darien
Community
Association

dariendca.org