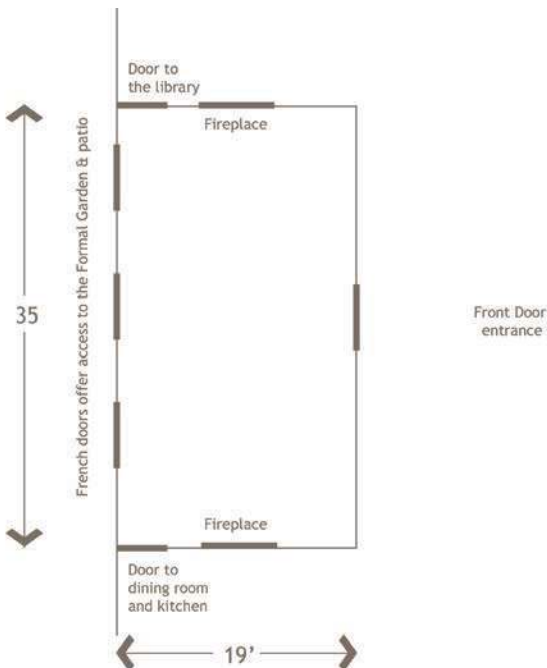


DCA Meadowlands McKitterick Room

The 1,000 square foot McKitterick Room is well-suited for luncheons, presentations, teas and showers that do not require the space of our Garden Wing. Fireplaces flank each end of the room, French doors lead to the formal garden, the dining room and a small commercial kitchen are nearby, and access for visitors is easy through either of our entrances. This room can be used in conjunction with the library and dining room for events that require slightly more space.



Seating capacities

Tables and chairs	44
Standing only	80



Above image courtesy of Marcia Selden Catering & Event Planning



The Darien
Community
Association

Contact Us

For further information or a tour of the estate, please contact Laura Boulton, our Catered Events Coordinator, at events@dariendca.org or 203-655-9050 extension 12.