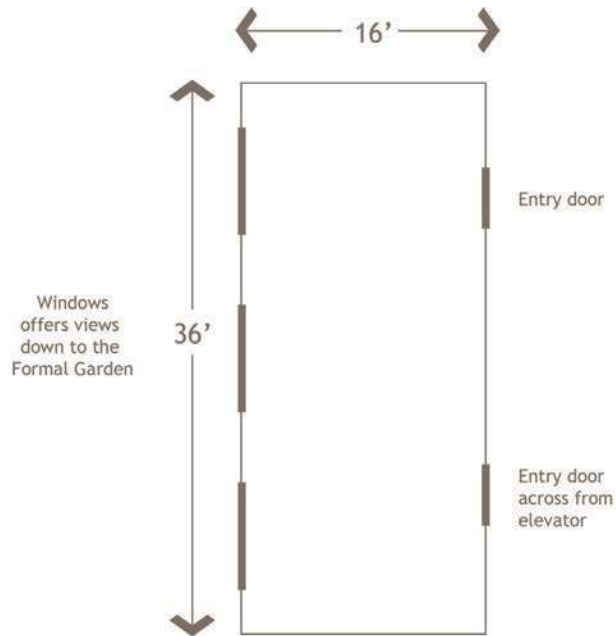


DCA Meadowlands Lillian Gade Room

The Lillian Gade Room provides a conference room atmosphere in a gorgeous setting. Overlooking the formal garden, this 600 square foot space offers comfortable chairs and space for a boardroom set-up, as well as other basic layouts. This room is conveniently located at the top of our staircase, accessible from the main door of the house. An elevator is available.



Seating capacity

| | |
|-------------------|----|
| Tables and chairs | 40 |
| Boardroom | 24 |



Contact Us

For further information or a tour of the estate, please contact Laura Boulton, our Catered Events Coordinator, at events@dariendca.org or 203-655-9050 extension 12.